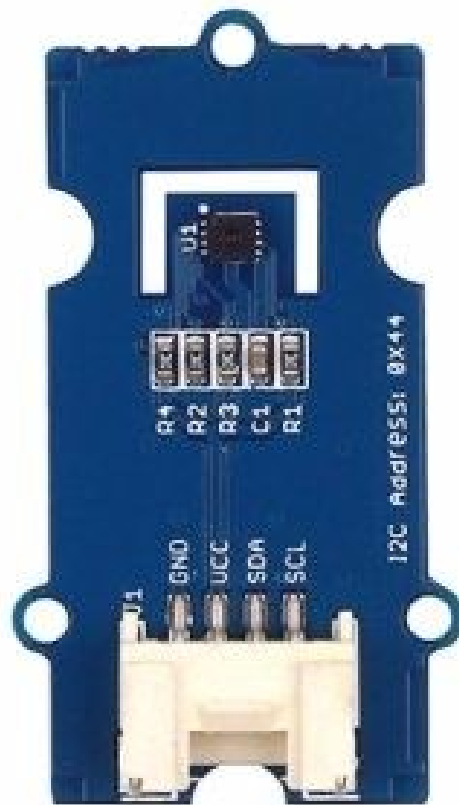


# Grove - Temperature & Humidity Sensor (SHT31)



This board was designed and built by Geppetto

Free automated documentation anytime.

Design for free @ <https://geppetto.gumstix.com/>

No Minimum Order

Automated Supply Chain

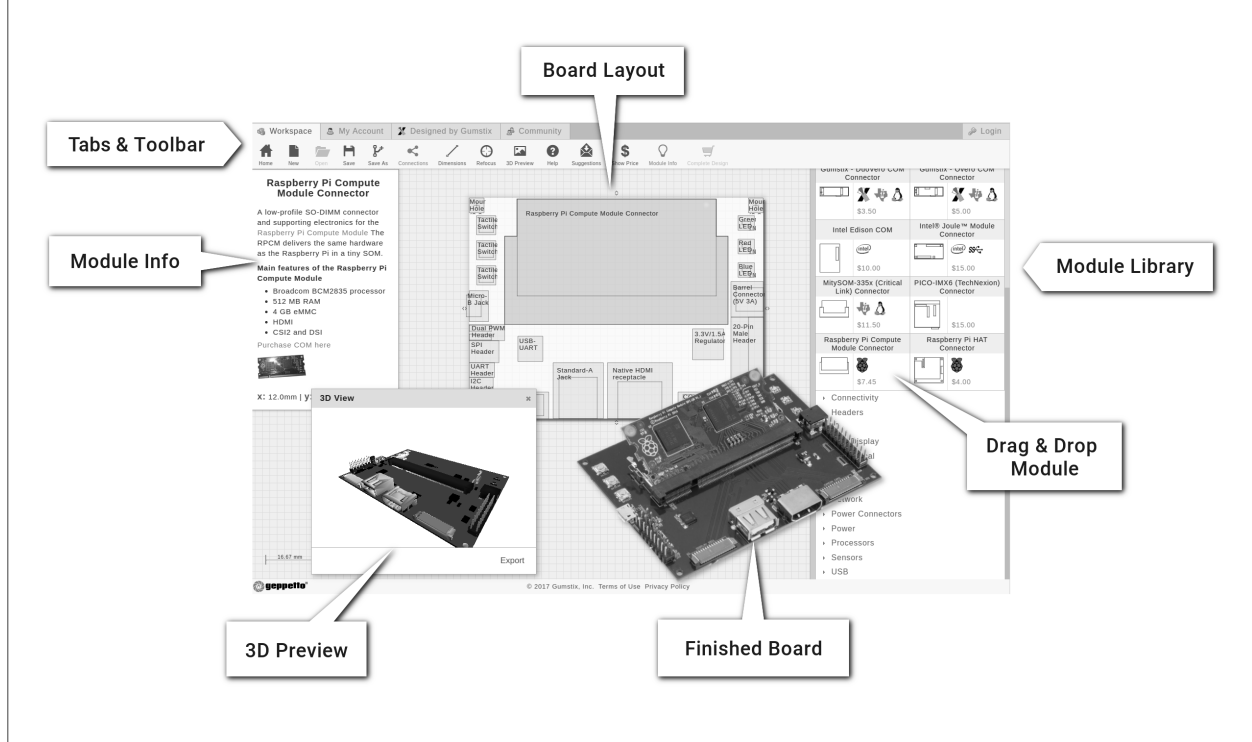
Reduce Cost and Errors



Thanks for using Geppetto to design this board!

*One Stop Design-to-Order*

Simply place displays, sensors, processors, and Geppetto connects it all.  
No routing needed.



Gumstix, Inc. shall have no liability of any kind, express or implied, arising out of the use of the Information in this document, including direct, indirect, special or consequential damages.

Gumstix, Inc. may have patents, patent applications, trademarks, copyrights, trade secrets or other intellectual property rights pertaining to Gumstix products described in this document (collectively "Gumstix Intellectual Property").

Except as expressly provided in any written license or agreement from Gumstix, Inc., this document and the information contained therein does not create any license to Gumstix's Intellectual Property.

The Information contained herein is subject to change without notice. Revisions may be issued regarding changes and/or additions.

Copyright © 2023, Gumstix, Inc. All rights reserved.

**Built in Geppetto**  
No engineering required.  
Delivered in 15 days.



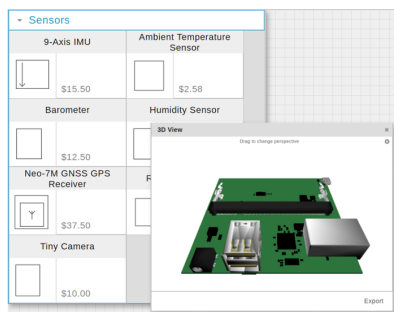
## Board Description

The SHT31 Temperature & Humidity sensor could be the finest and highest-accuracy humidity sensor you can find, as it can acquire the relative humidity at only 2% error.

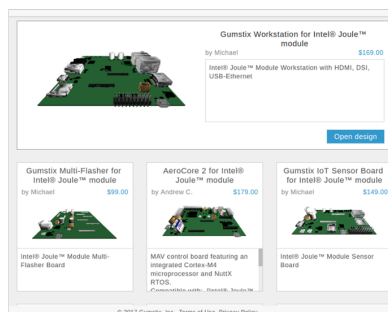
## Board Dimensions

5.33cm x 2.25cm

### Geppetto Makes Hardware Easy



**Custom Library and  
3D Design Preview**



**Design and Save  
Your Work Online**



**Free Automated  
Documentation on Demand**

Start your next design at [geppetto.gumstix.com](http://geppetto.gumstix.com)

**Built in Geppetto**  
No engineering required.  
Delivered in 15 days.

# Contents

<b>1</b>	<b>Modules on Board</b>	<b>1</b>
1.1	Sensors . . . . .	1
1.1.1	Grove-TempAndHumi_Sensor-SHT31 (v3) (1) . . . . .	1
1.2	Connectors (Signal) . . . . .	1
1.2.1	Grove Connector (R/A) (v2) (2) . . . . .	1
<b>2</b>	<b>Module Connections Graph</b>	<b>2</b>
<b>3</b>	<b>Module Power Graph</b>	<b>3</b>

# 1 Modules on Board



## 1.1 Sensors

### 1.1.1 Grove-TempAndHumi\_Sensor-SHT31 (v3) (1)

Grove-TempAndHumi Sensor-SHT31

## 1.2 Connectors (Signal)

### 1.2.1 Grove Connector (R/A) (v2) (2)

## 2 Module Connections Graph

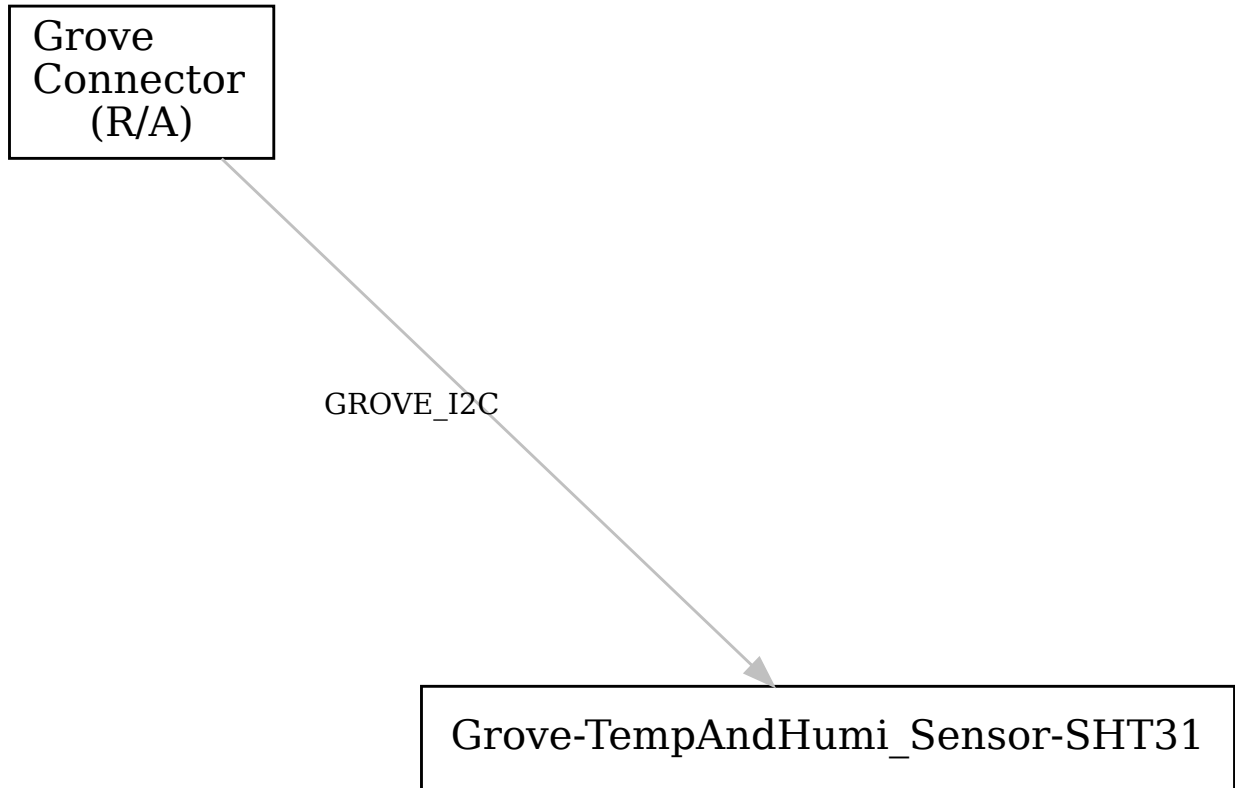


Figure 1: excludes power modules

### 3 Module Power Graph

